

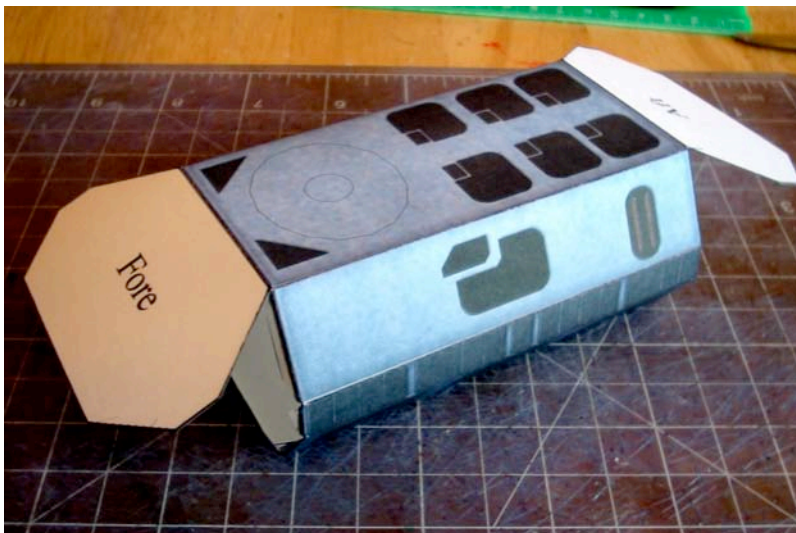


(Pluto Base version pictured)

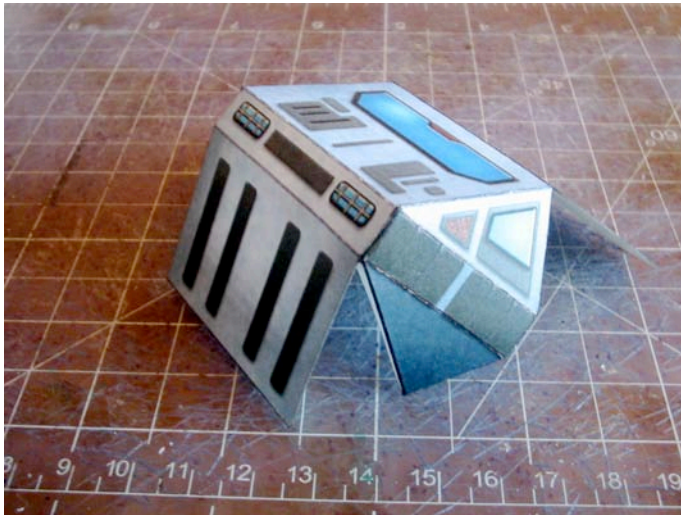
The Paper Worlds Armored Personnel Carrier, available in eight planetary color schemes.

These instructions assume you already have a basic knowledge of paper-modelling so explanation of some terms will be skipped. If you have any questions feel free to post them in the Paper Worlds forums or email me directly at;

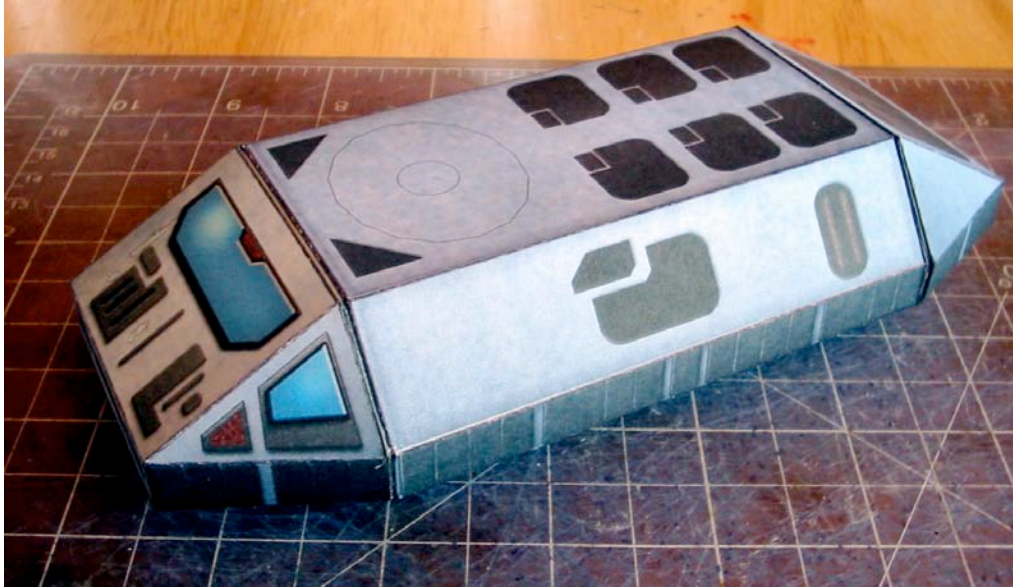
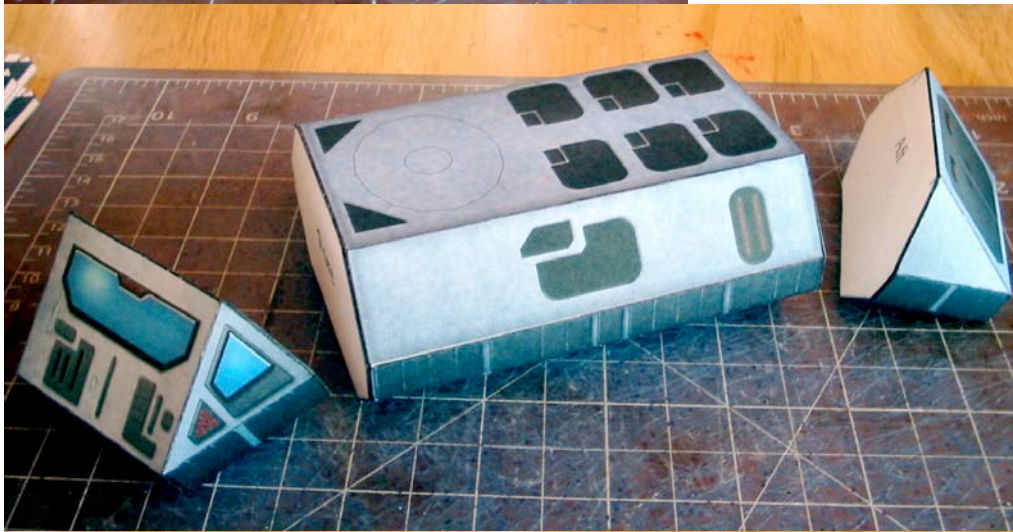
[squirmymdad@yahoo.com](mailto:squirmymdad@yahoo.com)



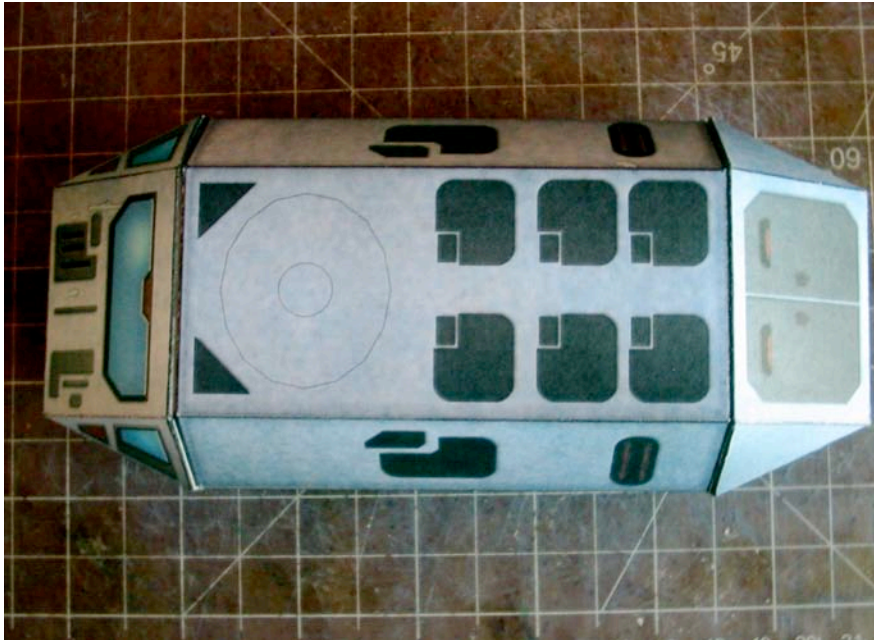
The main body, it's a tube. Roll it up and close the ends.



The fore and aft sections go together the same way; fold down the top part first, then attach the lower flaps, then slam the back lid shut. Attach all the hull sections together as shown.







Make some axles, they're just long boxes. The grey stripe will correspond with the underside of the APC for attachment points.



Cut out the six wheels, it was designed with rough terrain in mind.

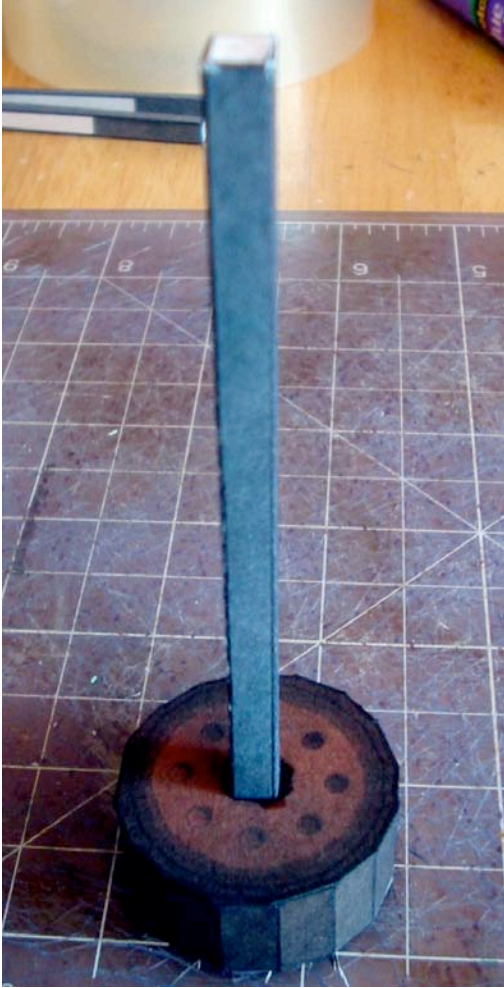
Cut the 'X' lines in the center of each wheel but don't remove the whitespace; push it in. You'll need those tabs to help hold the axles in place.



Push an axle through the hole to make sure it's big enough.



Glue the wheel ring together.



Glue down the two wheel sides, let dry.

Put some glue on the end of an axle and apply glue to those flaps that you didn't cut off, shove an axle in the hole. The glue on the end of the axle will attach it to the inside face of the wheel side.

Make three sets of wheels and axles. The wheels actually do have a left and right orientation; look for the highlight on the lugnuts and have that face up.

When you place the axle inside the wheel have the grey stripe facing up-same direction as the lugnut highlights.







The turret; I'll confess, I don't know why I broke it up into pieces like this, but it did make sense at the time.

Connect the pieces as shown, fold down the top of the turret first, then fold and glue the bottom turret flap.



This piece is what attaches the gun barrel to the turret. Unfortunately I just realized that it's missing an attachment flap. The lower left part of the piece as pictured should have a flap, quick! Draw one on before cutting it out. The white parts are what attach to the turret so no one'll see it. Oops.



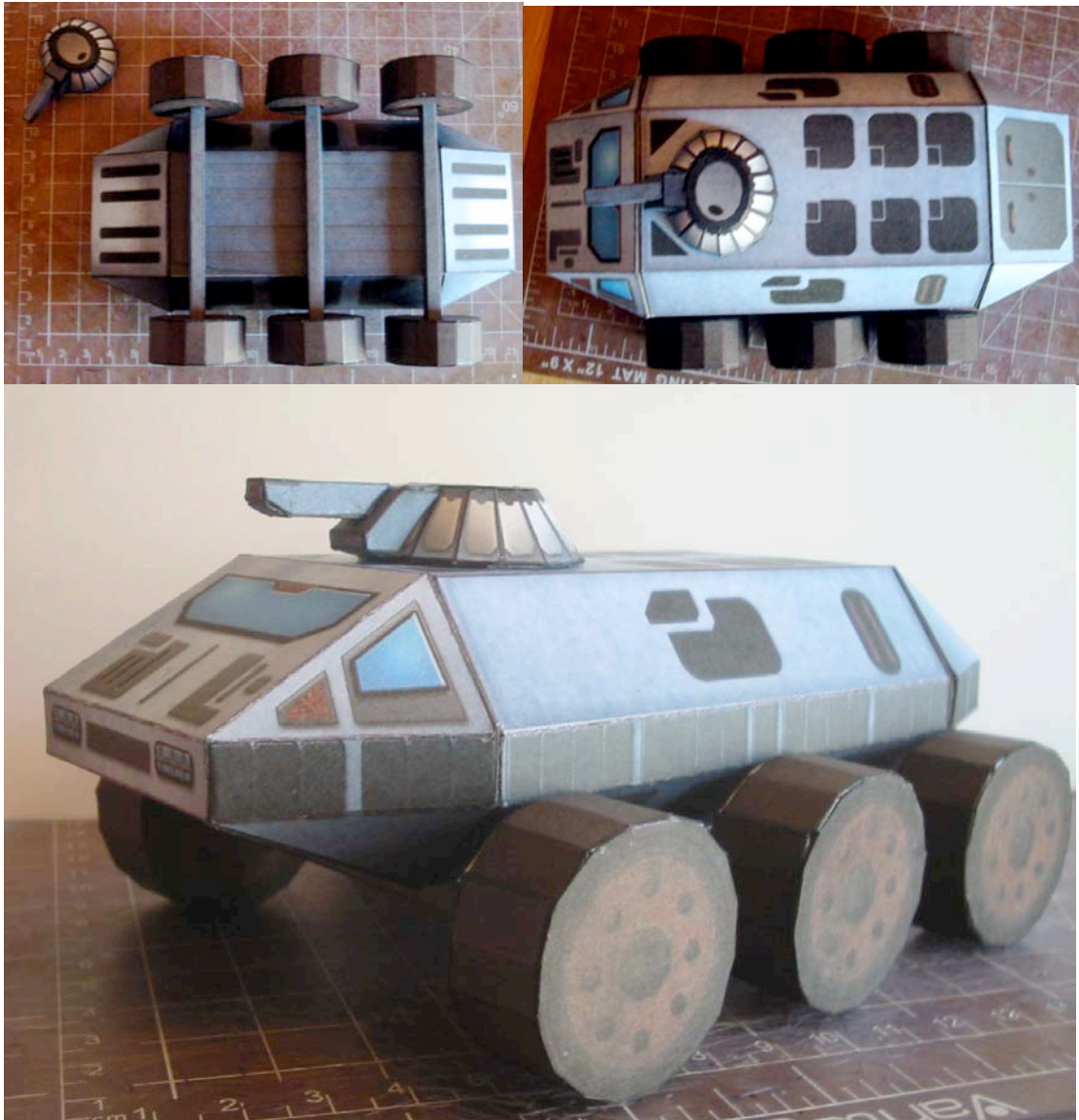
The gun mount attaches to the turret like so, notice the orientation of the handle on top of the turret.



Light cannon; roll into a square tube, close the ends, attach to the gun mount on the turret.







Attach the axles underneath, glue the turret on top in the corresponding shape line forward, or not. It's your model, go play with it now!

VROOOM! VRRROOOMM!

Eric R. Brown  
June, 2007